



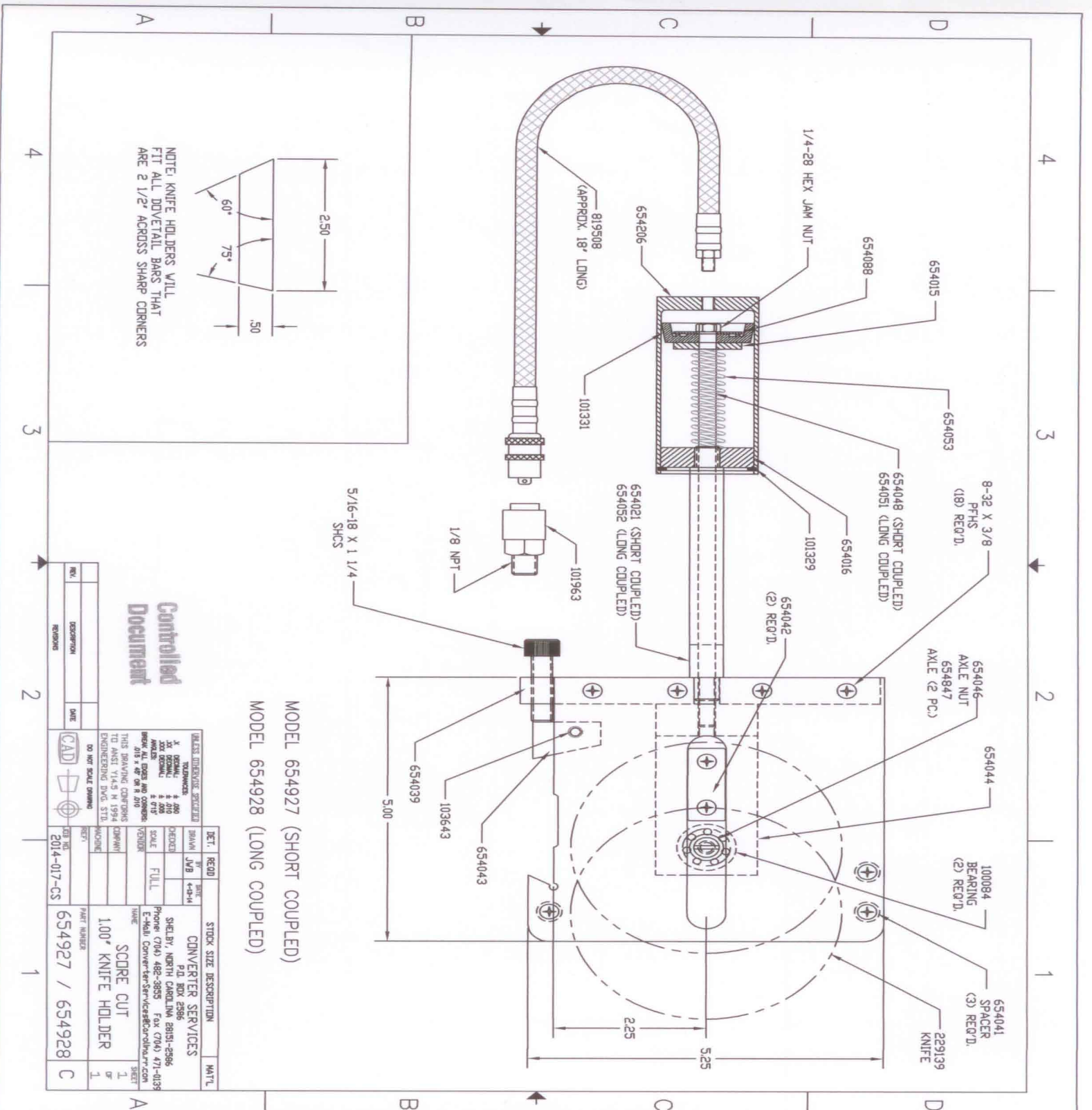
Holder #654927

1" Wide Holder, 1-1/2" diameter Cylinder Direct Connected, Short coupled, 4" Knife

Complete with:

- #229139 Knife
- #654847 Axle
- #654046 Axle Nut
- #100084 Bearing (2)

Min. Cut : 1"



Controlled Document

REV.	DESCRIPTION	DATE	BY	CHKD.

DESIGN		DATE	

PARTS NUMBER 4" OD SCORE CUT KNIFE HOLDER #654927 & #654928

Please call for current pricing

229139	SCORE CUT KNIFE (4" OD)
100084	BEARING (2 REQUIRED)
101329	SNAP RING
101331	PISTON CUP
101963	FEMALE SOCKET
103643	ROLL PIN 3/16 X 1"
654015	PISTON PLATE
654016	CYLINDER HEAD (REMOVABLE
654021	CONNECTING BUSHING (FOR HOLDER #654927)
654039	SCREW PLATE
654041	SPACER
654042	YOKE GUIDE PLATE (2 REQUIRED)
654043	CLAMP
654044	YOKE
654046	AXLE NUT
654048	PUSH ROD (FOR HOLDER #654927)
654051	PUSH ROD (FOR HOLDER #654928)
654052	CONNECTING BUSHING (FOR HOLDER #654928)
654053	RETURN SPRING
654088	WASHER
654206	CYLINDER & FIXED HEAD ASSEMBLY
654818	SIDE PLATE ASSEMBLY
654819	CYLINDER ASSEMBLY CONSISTING OF SNAP RING PISTON CUP, PISTON PLATE, CYLINDER HEAD, 654021 CONNECTING BUSHING, 654048 PUSH ROD, RETURN SPRING, WASHER, CYLINDER & FIXED HEAD ASSEMBLY & HEX JAM NUT
654847	AXLE (2 PIECES)
NOTE	ALL HOSES SUPPLIED WITH SHORT STEM
819508	HOSE & MALE SOCKET ASSEMBLY 18" LG W/SHORT STEM, W/O FEMALE SOCKET
1/4--28	HEX JAM NUT
8-32 X 3/8	PHILIPS FLAT HEAD SCREW
5/16 -18 X 1-1/4	SCOKET HEAD CAP SCREW
M4-0.7 X 12	FLAT PHILLIPS HEAD MACHINE SCREW

PRICES FOB SHIPPING POINT

11/01/2011 **PRICES SUBJECT TO CHANGE WITHOUT NOTICE**