

Converter Services To Order Call: 704-482-3855

Holder #654803

1/2" Wide Holder, 1-1/2" diameter Cylinder and Flexible Cable
Complete with:

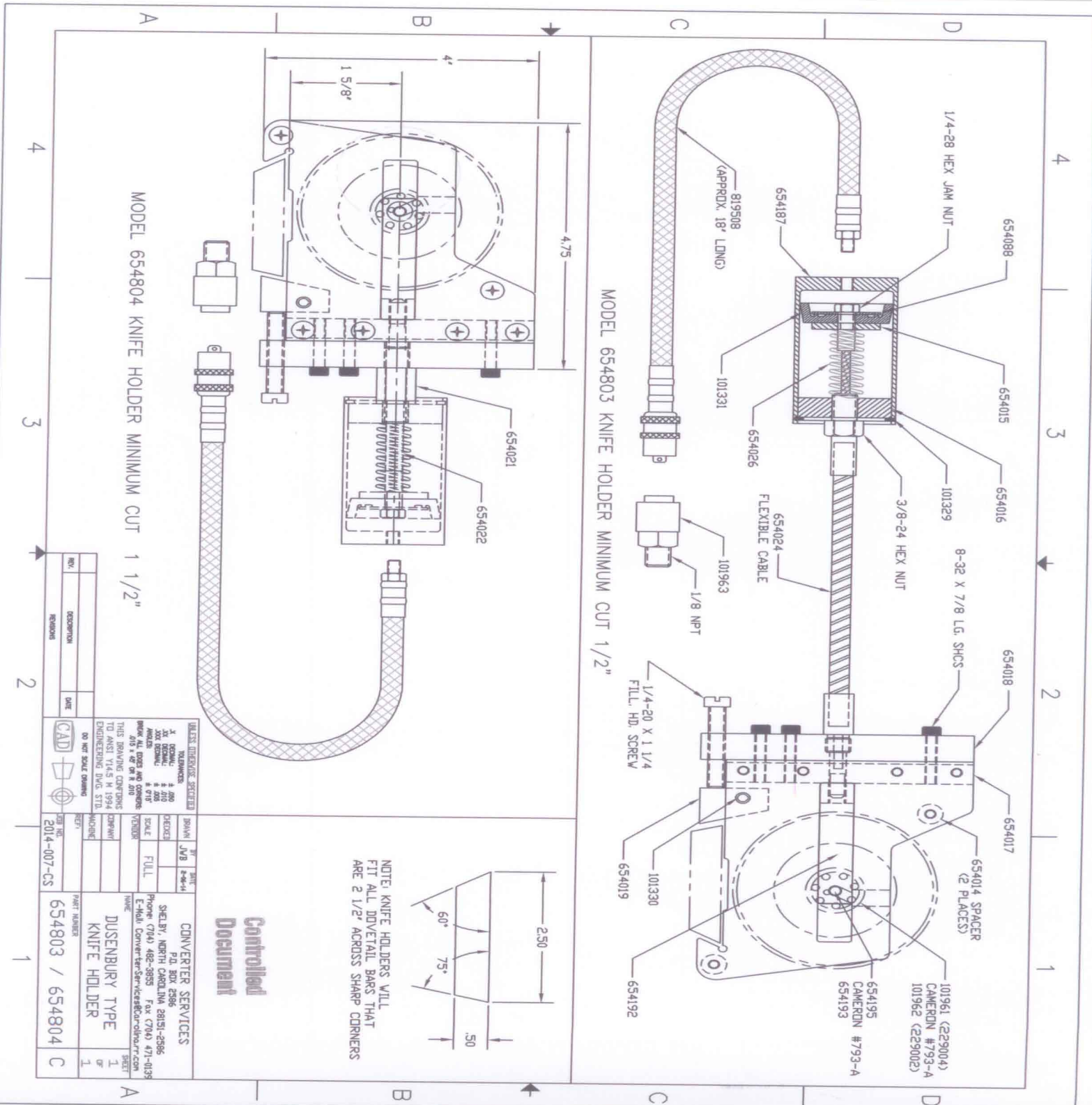
- #229002 Knife
- #654193 Axle
- #101962 Bearing

Min. Cut: 1/2"

Holder #654804

1/2" Wide Holder, 1-1/2" diameter Cylinder Direct Connected
Complete with:

- #229002 Knife
- #654193 Axle
- #101962 Bearing



MODEL 654804 KNIFE HOLDER MINIMUM CUT 1 1/2"

MODEL 654803 KNIFE HOLDER MINIMUM CUT 1/2"

Controlled Document

NOTE: KNIFE HOLDERS WILL FIT ALL DIVERTAIL BARS THAT ARE 2 1/2" ACROSS SHARP CORNERS

UNLESS OTHERWISE SPECIFIED		DRAWN		DATE	
TOLERANCES:	FINISH:	SCALE:	FULL:	REV.	DESCRIPTION
±.000	AS SHOWN	AS SHOWN	AS SHOWN	1	2014-007-CS
±.010	AS SHOWN	AS SHOWN	AS SHOWN	2	
±.020	AS SHOWN	AS SHOWN	AS SHOWN	3	
±.030	AS SHOWN	AS SHOWN	AS SHOWN	4	
±.040	AS SHOWN	AS SHOWN	AS SHOWN	5	
±.050	AS SHOWN	AS SHOWN	AS SHOWN	6	
±.060	AS SHOWN	AS SHOWN	AS SHOWN	7	
±.070	AS SHOWN	AS SHOWN	AS SHOWN	8	
±.080	AS SHOWN	AS SHOWN	AS SHOWN	9	
±.090	AS SHOWN	AS SHOWN	AS SHOWN	10	
±.100	AS SHOWN	AS SHOWN	AS SHOWN	11	
±.120	AS SHOWN	AS SHOWN	AS SHOWN	12	
±.150	AS SHOWN	AS SHOWN	AS SHOWN	13	
±.200	AS SHOWN	AS SHOWN	AS SHOWN	14	
±.250	AS SHOWN	AS SHOWN	AS SHOWN	15	
±.300	AS SHOWN	AS SHOWN	AS SHOWN	16	
±.350	AS SHOWN	AS SHOWN	AS SHOWN	17	
±.400	AS SHOWN	AS SHOWN	AS SHOWN	18	
±.450	AS SHOWN	AS SHOWN	AS SHOWN	19	
±.500	AS SHOWN	AS SHOWN	AS SHOWN	20	
±.600	AS SHOWN	AS SHOWN	AS SHOWN	21	
±.700	AS SHOWN	AS SHOWN	AS SHOWN	22	
±.800	AS SHOWN	AS SHOWN	AS SHOWN	23	
±.900	AS SHOWN	AS SHOWN	AS SHOWN	24	
±1.000	AS SHOWN	AS SHOWN	AS SHOWN	25	
±1.200	AS SHOWN	AS SHOWN	AS SHOWN	26	
±1.500	AS SHOWN	AS SHOWN	AS SHOWN	27	
±2.000	AS SHOWN	AS SHOWN	AS SHOWN	28	
±2.500	AS SHOWN	AS SHOWN	AS SHOWN	29	
±3.000	AS SHOWN	AS SHOWN	AS SHOWN	30	
±3.500	AS SHOWN	AS SHOWN	AS SHOWN	31	
±4.000	AS SHOWN	AS SHOWN	AS SHOWN	32	
±4.500	AS SHOWN	AS SHOWN	AS SHOWN	33	
±5.000	AS SHOWN	AS SHOWN	AS SHOWN	34	
±5.500	AS SHOWN	AS SHOWN	AS SHOWN	35	
±6.000	AS SHOWN	AS SHOWN	AS SHOWN	36	
±6.500	AS SHOWN	AS SHOWN	AS SHOWN	37	
±7.000	AS SHOWN	AS SHOWN	AS SHOWN	38	
±7.500	AS SHOWN	AS SHOWN	AS SHOWN	39	
±8.000	AS SHOWN	AS SHOWN	AS SHOWN	40	
±8.500	AS SHOWN	AS SHOWN	AS SHOWN	41	
±9.000	AS SHOWN	AS SHOWN	AS SHOWN	42	
±9.500	AS SHOWN	AS SHOWN	AS SHOWN	43	
±10.000	AS SHOWN	AS SHOWN	AS SHOWN	44	
±10.500	AS SHOWN	AS SHOWN	AS SHOWN	45	
±11.000	AS SHOWN	AS SHOWN	AS SHOWN	46	
±11.500	AS SHOWN	AS SHOWN	AS SHOWN	47	
±12.000	AS SHOWN	AS SHOWN	AS SHOWN	48	
±12.500	AS SHOWN	AS SHOWN	AS SHOWN	49	
±13.000	AS SHOWN	AS SHOWN	AS SHOWN	50	
±13.500	AS SHOWN	AS SHOWN	AS SHOWN	51	
±14.000	AS SHOWN	AS SHOWN	AS SHOWN	52	
±14.500	AS SHOWN	AS SHOWN	AS SHOWN	53	
±15.000	AS SHOWN	AS SHOWN	AS SHOWN	54	
±15.500	AS SHOWN	AS SHOWN	AS SHOWN	55	
±16.000	AS SHOWN	AS SHOWN	AS SHOWN	56	
±16.500	AS SHOWN	AS SHOWN	AS SHOWN	57	
±17.000	AS SHOWN	AS SHOWN	AS SHOWN	58	
±17.500	AS SHOWN	AS SHOWN	AS SHOWN	59	
±18.000	AS SHOWN	AS SHOWN	AS SHOWN	60	
±18.500	AS SHOWN	AS SHOWN	AS SHOWN	61	
±19.000	AS SHOWN	AS SHOWN	AS SHOWN	62	
±19.500	AS SHOWN	AS SHOWN	AS SHOWN	63	
±20.000	AS SHOWN	AS SHOWN	AS SHOWN	64	
±20.500	AS SHOWN	AS SHOWN	AS SHOWN	65	
±21.000	AS SHOWN	AS SHOWN	AS SHOWN	66	
±21.500	AS SHOWN	AS SHOWN	AS SHOWN	67	
±22.000	AS SHOWN	AS SHOWN	AS SHOWN	68	
±22.500	AS SHOWN	AS SHOWN	AS SHOWN	69	
±23.000	AS SHOWN	AS SHOWN	AS SHOWN	70	
±23.500	AS SHOWN	AS SHOWN	AS SHOWN	71	
±24.000	AS SHOWN	AS SHOWN	AS SHOWN	72	
±24.500	AS SHOWN	AS SHOWN	AS SHOWN	73	
±25.000	AS SHOWN	AS SHOWN	AS SHOWN	74	
±25.500	AS SHOWN	AS SHOWN	AS SHOWN	75	
±26.000	AS SHOWN	AS SHOWN	AS SHOWN	76	
±26.500	AS SHOWN	AS SHOWN	AS SHOWN	77	
±27.000	AS SHOWN	AS SHOWN	AS SHOWN	78	
±27.500	AS SHOWN	AS SHOWN	AS SHOWN	79	
±28.000	AS SHOWN	AS SHOWN	AS SHOWN	80	
±28.500	AS SHOWN	AS SHOWN	AS SHOWN	81	
±29.000	AS SHOWN	AS SHOWN	AS SHOWN	82	
±29.500	AS SHOWN	AS SHOWN	AS SHOWN	83	
±30.000	AS SHOWN	AS SHOWN	AS SHOWN	84	
±30.500	AS SHOWN	AS SHOWN	AS SHOWN	85	
±31.000	AS SHOWN	AS SHOWN	AS SHOWN	86	
±31.500	AS SHOWN	AS SHOWN	AS SHOWN	87	
±32.000	AS SHOWN	AS SHOWN	AS SHOWN	88	
±32.500	AS SHOWN	AS SHOWN	AS SHOWN	89	
±33.000	AS SHOWN	AS SHOWN	AS SHOWN	90	
±33.500	AS SHOWN	AS SHOWN	AS SHOWN	91	
±34.000	AS SHOWN	AS SHOWN	AS SHOWN	92	
±34.500	AS SHOWN	AS SHOWN	AS SHOWN	93	
±35.000	AS SHOWN	AS SHOWN	AS SHOWN	94	
±35.500	AS SHOWN	AS SHOWN	AS SHOWN	95	
±36.000	AS SHOWN	AS SHOWN	AS SHOWN	96	
±36.500	AS SHOWN	AS SHOWN	AS SHOWN	97	
±37.000	AS SHOWN	AS SHOWN	AS SHOWN	98	
±37.500	AS SHOWN	AS SHOWN	AS SHOWN	99	
±38.000	AS SHOWN	AS SHOWN	AS SHOWN	100	

CONVERTER SERVICES
P.O. BOX 2986
SHELBY, NORTH CAROLINA 28151-2986
Phone (704) 482-3855 Fax (704) 471-0135
E-Mail: ConverterServices@con-hold.com

PART NUMBER: 654803 / 654804
DUSENBURY TYPE: KNIFE HOLDER
SHEET: 1 OF 1

Converter Services

PARTS NUMBER Dusenbery Type Score Cut Knife Holder Model #654803/804

Please call for
current pricing

101329	SNAP RING
101330	ROLL PIN
101331	PISTON CUP
101961	BEARING, USED WITH KNIFE 793-A (DUSENBERY# 229004)
101962	BEARING, USED WITH KNIFE #229002
101963	FEMALE SOCKET
654014	SPACER
654015	PISTON PLATE
654016	CYLINDER HEAD (REMOVABLE)
654017	SCREW BLOCK (MUST BE DRILLED AFTER ASSEMBLY)
654018	SCREW PLATE
654019	CLAMP
654021	CONNECTING BUSHING (FOR HOLDER #654804)
654022	PUSH ROD (FOR HOLDER #654804)
654024	FLEXIBLE CABLE (FOR HOLDER #654803)
654026	RETURN SPRING
654088	WASHER
654187	CYLINDER & FIXED HEAD ASSEMBLY
654192	YOKE
654193	AXLE, USED WITH KNIFE #229002
654195	AXLE, USED WITH KNIFE #793-A (DUSENBERY #229004)
654802	HARDENED HOLDER ONLY
654902	CABLE ASSEMBLY, CONSISTING OF FLEXIBLE CABLE, WASHER, PISTON CUP, NUT, CYLINDER HEAD, RETURN SPRING, PISTON PLATE & HEX JAM NUT
654903	CYLINDER & HOSE ASSEMBLY, CONSISTING OF FEMALE SOCKET, SNAP RING, CYLINDER & FIXED HEAD ASSEMBLY AND HOSE & MALE SOCKET ASSEMBLY
654918	PUSH ROD ASSEMBLY, CONSISTING OF PISTON CUP, CONNECTING BUSHING, NUT, PUSH ROD, PISTON PLATE, RETURN SPRING, CYLINDER HEAD & WASHER

NOTE HOSES SUPPLIED WITH SHORT STEM

819508 HOSE & MALE SOCKET ASSEMBLY
18" LG W/SHORT STEM, W/O FEMALE SOCKET

1/4--28	HEX JAM NUT
3/8 X 24	HEX NUT
8-32 X 1/2	PHILIPS FLAT HEAD SCREW
8-32 X 7/8	SOCKET HEAD CAP SCREW
1/4-20 X 1-1/4	FILLISTER HEAD SCREW
M4-0.7 X 12	FLAT PHILLIPS HEAD MACHINE SCREW

PRICES FOB SHIPPING POINT

11/01/2011 **PRICES SUBJECT TO CHANGE WITHOUT NOTICE**